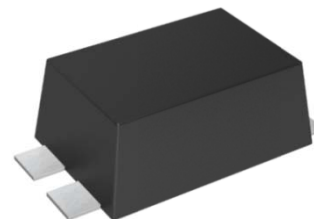


Thyristor Surge Suppressor

Version: A1 2015-01-12

Features

- Excellent capability of absorbing transient surge
- Quick response to surge voltage (nS Level)
- Eliminates overvoltage caused by fast rising transients
- Moisture sensitivity level: level 1
- Weight 88 mg
- Non-degenerative
- Uni-directional



SMB-T

Application Information

Package (top view)

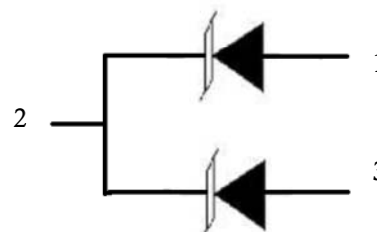
- SLIC



Agency Approvals

Schematic Symbol

Icon	Description
RoHS	Compliance with 2011/65/EU
HF	Compliance with IEC61249-2-21:2003



Part Number and Electrical Parameter

Part Number	IDRM@VDRM(PIN2-1, 3)		VS ^① @IS(PIN2-1, 3)		VT@IT(PIN2-1, 3)		VF@IF(PIN1, 3-2)		IH(PIN2-1, 3)	CO ^② (PIN2-1, 3)
	μA	V	V(MAX)	mA	V	A	V	mA	mA	pF
	MAX	Pin2 to1,3	Pin2 to1,3		MAX		MAX		MIN	MAX
BS1100N-2A1	5	95	130	800	4	2.2	1	10	120	100

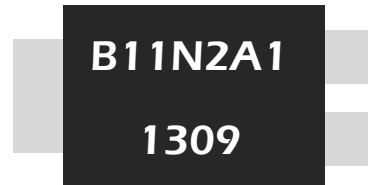
Absolute maximum ratings measured at TA= 25°C RH = 45%-75% (unless otherwise noted).

①Vs is measured at 100KV/S

② Off-state Capacitance is measured at VDC=2V, VRMS=1V, f=1MHz

BS 1100 N -2 A 1
(1) (2) (3) (4) (5) (6)

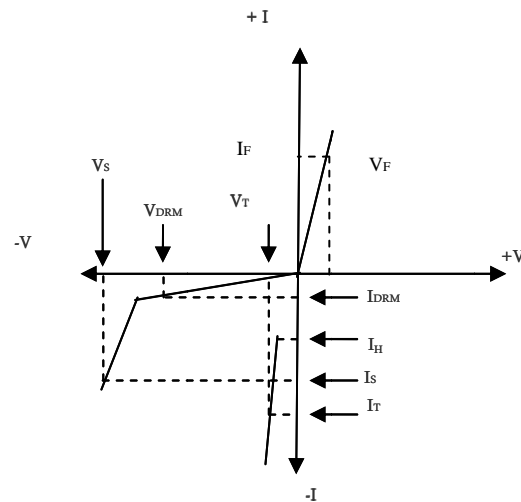
- (1) Bencent Semiconductor Surge Arrester
- (2) Off state Voltage, e.g: 1100 = $110 \times 10^0 = 110V$.
- (3) Package : SMB-T
- (4) 2 Lines Protection
- (5) Rating Surge Voltage: 2KV(10/700 μ S)
- (6) Polarity: Uni-directional



B11N2A1: Part Number
1309 : Septempr, 2013

V-I Curve

Parameters	Definition
V_{DRM}	Peak Off-state Voltage
I_{DRM}	Off-state Current
V_S	Switching Voltage
I_S	Switching Current
I_H	Holding Current
V_T	On-state Voltage
I_T	On-state Current
V_F	Forward on-state voltage
I_F	Forward current
C_o	Off-state Capacitance



Surge Ratings

Current Waveform	5/320 μ s*	8/20 μ s	10/1000 μ s
Voltage Waveform	10/700 μ s*	1.2/50 μ s	10/1000 μ s
I_{pp}	50A	300A	35A

-Peak pulse current rating (I_{pp}) is repetitive and guaranteed for the life of the product;

-Bencent makes the test for 5/320 μ s@50A* (10/700 μ s@2KV), 8/20 μ s@300A(1.2/50 μ s@600V), but for other IPP value derived from experience is just for reference only. Bencent will not take any obligation for these parameters, so before applying our parts, please make sure to verify the parameters listed in the above table.

Thermal Considerations

Symbol	Parameter	Value	Unit
T_J	Operating Junction Temperature Range	-40 to +150	$^{\circ}C$
T_S	Storage Temperature Range	-60 to +150	$^{\circ}C$

Physical Characteristics

Lead Material	Copper Alloy
Body Material	UL recognized epoxy meeting flammability classification 94V-0
Terminal Finish	100% Matte-Tin Plated

Thyristor Surge Suppressor

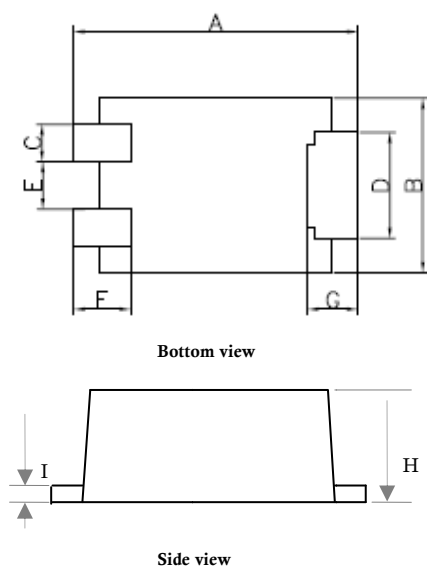
Version: A1 2015-01-12

Environmental Characteristics

Testing Items	Technical Standards
High Temperature Reverse Bias Test	Temperature: $150\pm 3^{\circ}\text{C}$, Bias= $80\%V_{\text{DRM}}$ Time:168H
High Temperature Life Test	Temperature: 150°C Time:168H
High-low Temperature Cycle Test	Temperature: From -40°C to 125°C Dwell time: 30min, 10-100 cycles
High Temperature & High Humidity Test	Temperature: 85°C Humidity:85% Test time:168H
Pressure Cooker Test	Temperature: 121°C , 2atm. Humidity:100% Test time: 24H to 168H
Resistance of Soldering Heat	Temperature: $260\pm 5^{\circ}\text{C}$ Time of dip soldering: 10s, 3times

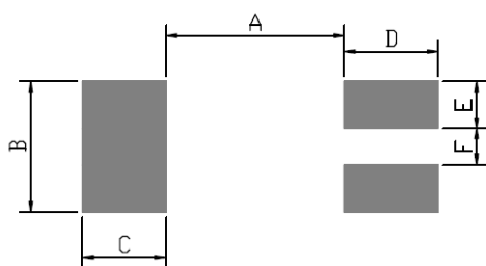
Note: The above testing items can be specified by customers by contacting Bencent service

Product Dimensions



REF	mm	inch
A	5.4 ± 0.3	0.213 ± 0.012
B	3.3 ± 0.3	0.130 ± 0.012
C	0.7 ± 0.03	0.028 ± 0.001
D	2.0 ± 0.2	0.079 ± 0.008
E	0.9 ± 0.2	0.035 ± 0.008
F	1.32 ± 0.3	0.052 ± 0.012
G	1.13 ± 0.3	0.045 ± 0.012
H	2 ± 0.3	0.079 ± 0.012
I	0.25 ± 0.05	0.010 ± 0.002

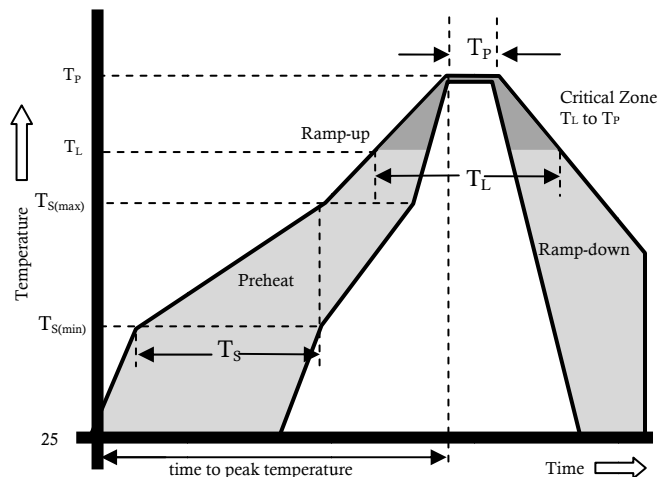
Recommended Soldering Pad



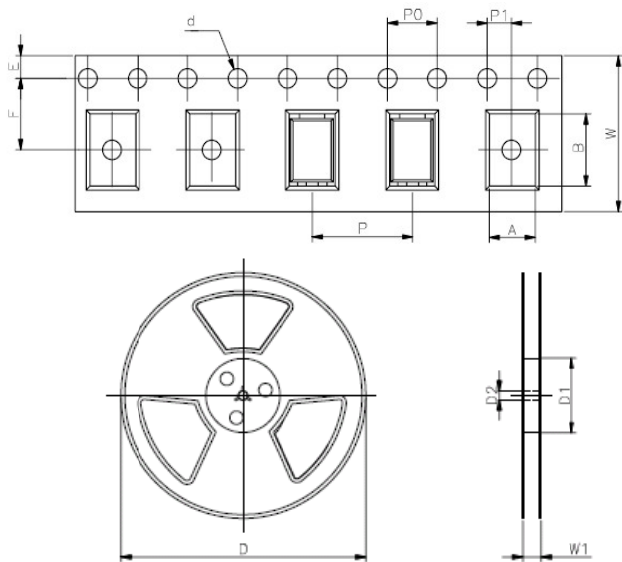
REF	mm	inch
A	3.4	0.134
B	2.5	0.098
C	1.6	0.059
D	1.8	0.059
E	0.9	0.035
F	0.7	0.032

Reflow Profile

Reflow Condition		Pb-Free Assembly
Pre Heat	Temperature Min.	+150°C
	Temperature Max.	+200°C
	Time(Min to Max)	60 – 180 secs.
Average ramp up rate(Liquidus Temp(T_L) to peak)		3°C/sec. Max.
Ts(max) to T_L - Ramp-up Rate		3°C/sec. Max.
Reflow	- Temperature (T_L) (Liquidus)	+217°C
	- Temperature (T_L)	60 – 150 secs.
Peak Temp (T_P)		+(260+0/-5)°C
Time within 5°C of actual Peak Temp (T_P)		30secs.
Ramp-down Rate		6°C/sec. Max.
Time 25°C to peak Temp (T_P)		8 min. Max.
Do not exceed		+260°C



Package Reel Information



REF	mm	inch
A	3.65+/-0.3	0.144+/-0.012
B	5.69+/-0.3	0.244+/-0.012
d	1.5+/-0.1	0.059+/-0.004
D	330.0	13.0
D1	100+/-3	3.937+/-0.118
D2	13+/-0.3	0.512+/-0.012
E	1.5+/-0.2	0.059+/-0.008
F	5.65+/-0.2	0.222+/-0.008
P	8.0+/-0.2	0.315+/-0.008
P0	4.0+/-0.2	0.157+/-0.008
P1	2.0+/-0.2	0.079+/-0.008
W	12.0+/-0.2	0.472+/-0.008
W1	16.8+/-2.0	0.661+/-0.079

Outline	Reel (pcs)	Per Carton (pcs)	Reel Diameters (mm)	Carton Size(mm)		
				L	W	H
Taping	3,000	24,000	330	360	360	380